

## WAYS TO WORK WITH HSRI

HSRI welcomes participation from the wider community, including community members and organizations, healthcare providers, foundations and trusts. HSRI also has opportunities for students, researchers and visiting scholars interested in being affiliated with UC Merced.

HSRI can help you benefit from the rich resources at UC Merced by providing an introduction to:

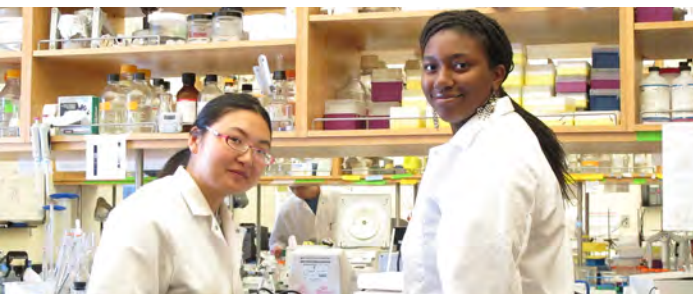
- Members of the faculty for research projects;
- Undergraduate and graduate students for projects;
- Staff who coordinate internships, volunteering and service learning;
- Grant makers, philanthropic organizations and foundations to fund your research;
- Training in health sciences, research and evaluation; and
- Knowledgeable faculty and staff for grant development;

HSRI is committed to Community Engaged Scholarship: working with community organizations and individuals to find solutions that are mutually beneficial.

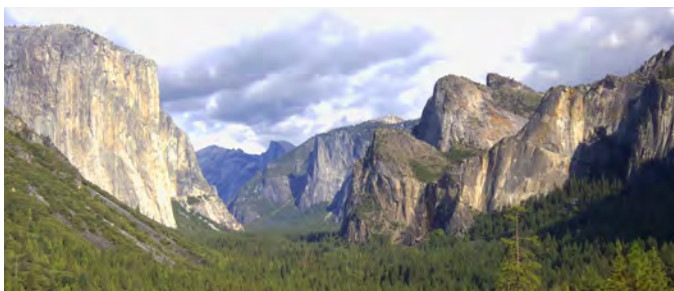
The first step in this process is making the initial contact.

To get started, or for more information, contact Stergios Roussos, our Director of Community Research, at [sroussos@ucmerced.edu](mailto:sroussos@ucmerced.edu) or visit our web site:

**[hsri.ucmerced.edu](http://hsri.ucmerced.edu)**



UNIVERSITY  
OF  
CALIFORNIA  
**MERCED**



UC MERCED  
Health Sciences  
RESEARCH INSTITUTE

### CONTACT US

Paul Brown - Director and Professor  
[pbrown3@ucmerced.edu](mailto:pbrown3@ucmerced.edu)

Stergios Roussos - Director of Community Research  
[sroussos@ucmerced.edu](mailto:sroussos@ucmerced.edu)

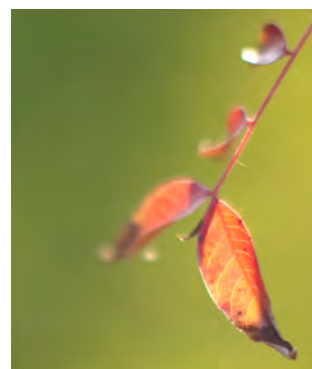
Trevor Hirst - Executive Director  
[thirst@ucmerced.edu](mailto:thirst@ucmerced.edu)

Geneva Skram - Program Manager  
[gskram@ucmerced.edu](mailto:gskram@ucmerced.edu)

**Health Sciences Research Institute**  
5200 N. Lake Road  
Merced, CA 95343

Phone: (209) 228-4476

**[hsri.ucmerced.edu](http://hsri.ucmerced.edu)**



HEALTH  
SCIENCES  
RESEARCH  
INSTITUTE

UCMERCED

## ABOUT HSRI

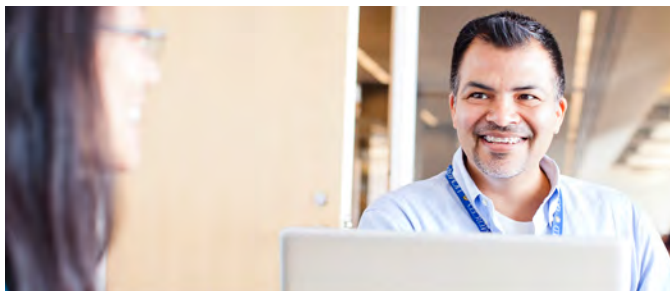
The Health Sciences Research Institute (HSRI) is the focal point for health and medical research at UC Merced. With over 40 faculty across the three schools (Engineering, Natural Sciences, and Social Sciences, Humanities and Arts), HSRI aims to foster world-renowned researchers through its work to improve the health of the people in the San Joaquin Valley and beyond.

HSRI research covers the range of health and medical research, including:

- Health disparities and inequalities in health;
- Environmental health and toxicology;
- Biomolecular, cellular and bioengineering research;
- Cancer control and prevention;
- Evaluation and effectiveness research;
- Neurosciences; and
- Public health systems and services research.

The opportunities to address the growing and complex health issues of the San Joaquin Valley and beyond require inter- and multidisciplinary teams.

HSRI's collaborative multidisciplinary research clusters and community emphasis provide an opportunity to rapidly develop, test, and disseminate new ways of improving health and delivering healthcare. This will help establish UC Merced as a world-renowned research university while improving the health of the people in the San Joaquin Valley.



## STRATEGIC RESEARCH CLUSTERS

HSRI uses “Research Clusters” as a strategy for addressing existing and emerging concerns, interests, and opportunities. Research Clusters allow academic, healthcare providers, and community members to conduct world-renowned research on important problems using existing expertise and experience.

This approach fosters collaborative, interdisciplinary teams with focus and flexibility necessary for innovation.

Each Research Cluster sets its own direction and approach to addressing their selected topic. HSRI supports each Research Cluster through resources and relationships important to collaborative projects.

HSRI Research Clusters are being formed around such diverse topics as:

- Health disparities;
- Cancer prevention, control and treatment;
- Environmental health;
- Infectious diseases;
- Health systems and policy;
- Poverty, health and interventions; and
- Evaluation.

*Contact us to discuss how current or new Research Clusters may assist your work.*

## COMMUNITY RESEARCH UNIT

HSRI's Community Research Unit understands that organizations and individuals in the community have valuable insights and programs. They, too, can be equal partners in the research endeavor. Too often, these community leaders lack the funding, staff, capacity, and resources to develop and apply their ideas to benefit their constituencies.

UC Merced, as part of the UC Tier 1 research system, can help community programs and innovators to fully develop and apply their ideas through research. This community research would lead to more effective programs and more widely disseminate ideas and findings to improve communities.

The Community Research Unit collaborates with community organizations, innovators and researchers to:

- Develop current ideas and programs through research and evaluation;
- Disseminate existing programs and innovations;
- Train and develop academic and community members in community research methods; and
- Nurture academic and community infrastructure for community research.

Through HSRI's Community Research Unit, community organizations and innovators will always have a resource to help them achieve to their fullest potential through research.

